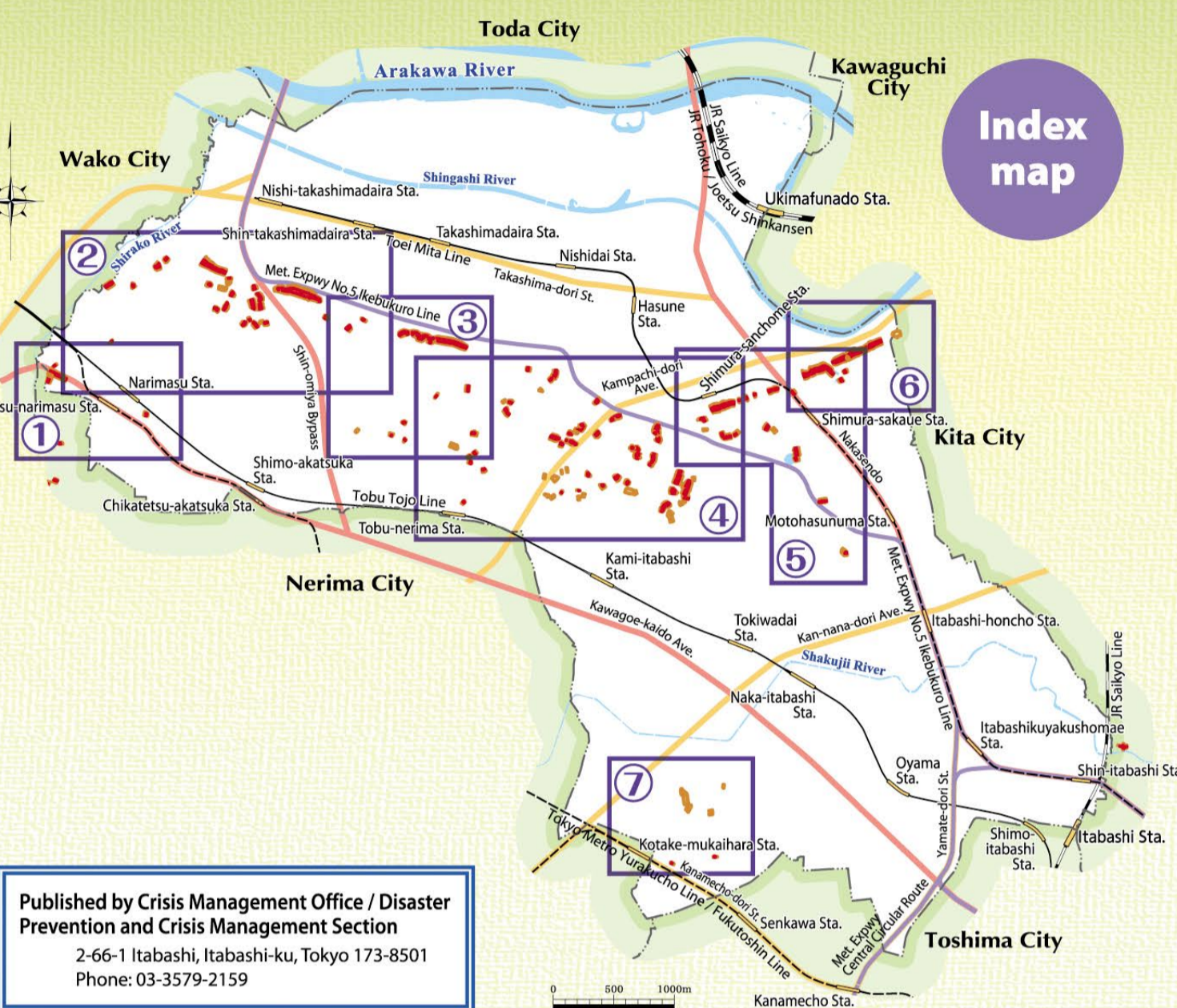


Itabashi City Sediment Disaster Hazard Map

The Itabashi City Sediment Disaster Hazard Map shows the "Sediment Disaster (Special) Alert Areas" and evacuation sites and routes as of June 30, 2023, designated by the Tokyo Metropolitan Government based on the Sediment Disasters Prevention Act. Types of sediment disasters (*) are "landslides of rapid slopes (cliff failure)", "mudslides", and "landslides", all of which are tremendous disasters caused by heavy rain etc., and may deprive people's lives and properties in an instance. Please make use of this Sediment Disaster Hazard Map so that you can check hazardous locations and evacuation methods with your family members and neighbors on a regular basis.

*Note: Possible sediment disasters in Itabashi City are **cliff failures (landslides of rapid slopes) only**.

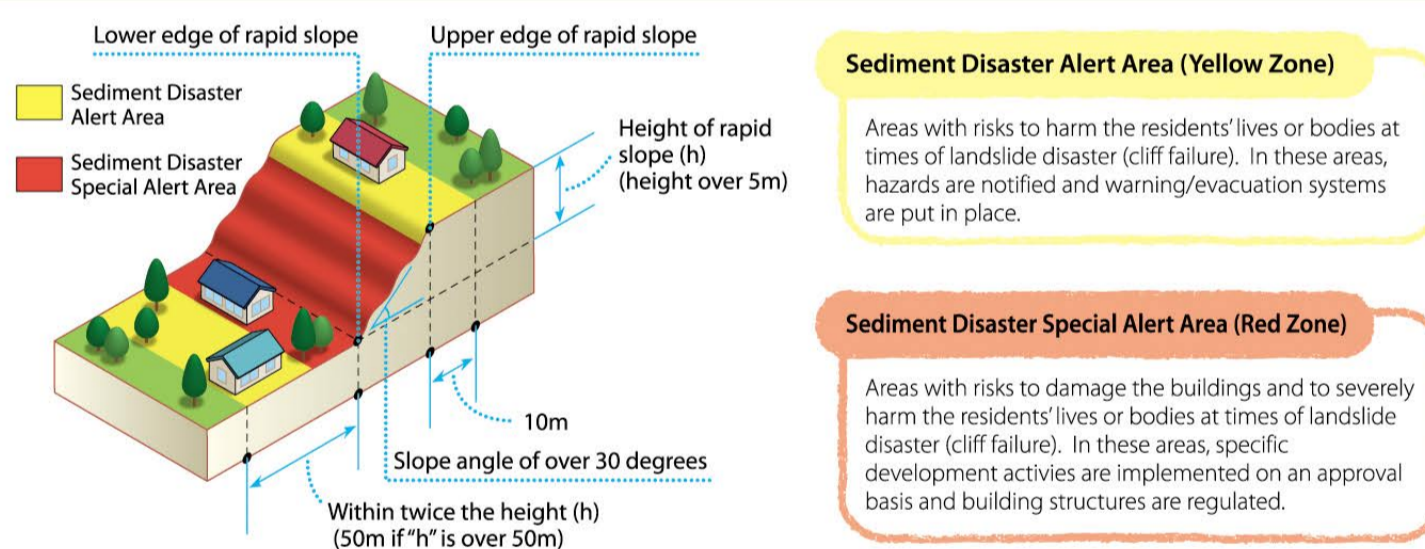


Address Index

This index shows which districts are/are not designated as Sediment Disaster Alert Area or Sediment Disaster Special Alert Area. Districts with ○ are designated. For details of designated areas, please refer to the respective detailed area map.

District name	Sediment Disaster Alert Area	Sediment Disaster Special Alert Area	Detailed maps	District # (区番号)	Postal numbers
Asoko	○	○	(4)	(115)	
Asokua 1 Chome				N/A	
Asokua 2 Chome				N/A	
Asokua 3 Chome				N/A	
Asokua 4 Chome	○	○	(2)	005, 006, 007, 145, 146, (010)	
Asokua 5 Chome	○	○	(2)	008, 009, 010, 011, 143, 144, (012), (014), (142)	
Asokua 6 Chome				N/A	
Asokua 7 Chome				N/A	
Asokua 8 Chome				N/A	
Asokubanashi 1 Chome	○	○	(2)	012, 013, 014, 141, 142	
Asokubanashi 2 Chome				N/A	
Asokubanashi 3 Chome				N/A	
Asokubanashi 4 Chome				N/A	
Asokuba 1 Chome	○	○	(6)	051, 072, 073	
Asokuba 2 Chome	○	○	(6)	052, 053, 054, 055, 069, 070, 071, (027)(Zone # issued by Kita City)	
Asokuba 3 Chome	○	○	(6)	063, 064	
Asokuchō				N/A	
Asokuchō 1 Chome				N/A	
Asokuchō 2 Chome				N/A	
Asokuchō 3 Chome				N/A	
Asokuchō 4 Chome				N/A	
Asokuchō 5 Chome				N/A	
Asokuchō 6 Chome				N/A	
Asokuchō 7 Chome				N/A	
Asokuchō 8 Chome				N/A	
Asokuchō 9 Chome				N/A	
Asokuchō 10 Chome				N/A	
Asokuchō 11 Chome				N/A	
Asokuchō 12 Chome				N/A	
Asokuchō 13 Chome				N/A	
Asokuchō 14 Chome				N/A	
Asokuchō 15 Chome				N/A	
Asokuchō 16 Chome				N/A	
Asokuchō 17 Chome				N/A	
Asokuchō 18 Chome				N/A	
Asokuchō 19 Chome				N/A	
Asokuchō 20 Chome				N/A	
Asokuchō 21 Chome				N/A	
Asokuchō 22 Chome				N/A	
Asokuchō 23 Chome				N/A	
Asokuchō 24 Chome				N/A	
Asokuchō 25 Chome				N/A	
Asokuchō 26 Chome				N/A	
Asokuchō 27 Chome				N/A	
Asokuchō 28 Chome				N/A	
Asokuchō 29 Chome				N/A	
Asokuchō 30 Chome				N/A	
Asokuchō 31 Chome				N/A	
Asokuchō 32 Chome				N/A	
Asokuchō 33 Chome				N/A	
Asokuchō 34 Chome				N/A	
Asokuchō 35 Chome				N/A	
Asokuchō 36 Chome				N/A	
Asokuchō 37 Chome				N/A	
Asokuchō 38 Chome				N/A	
Asokuchō 39 Chome				N/A	
Asokuchō 40 Chome				N/A	
Asokuchō 41 Chome				N/A	
Asokuchō 42 Chome				N/A	
Asokuchō 43 Chome				N/A	
Asokuchō 44 Chome				N/A	
Asokuchō 45 Chome				N/A	
Asokuchō 46 Chome				N/A	
Asokuchō 47 Chome				N/A	
Asokuchō 48 Chome				N/A	
Asokuchō 49 Chome				N/A	
Asokuchō 50 Chome				N/A	
Asokuchō 51 Chome				N/A	
Asokuchō 52 Chome				N/A	
Asokuchō 53 Chome				N/A	
Asokuchō 54 Chome				N/A	
Asokuchō 55 Chome				N/A	
Asokuchō 56 Chome				N/A	
Asokuchō 57 Chome				N/A	
Asokuchō 58 Chome				N/A	
Asokuchō 59 Chome				N/A	
Asokuchō 60 Chome				N/A	
Asokuchō 61 Chome				N/A	
Asokuchō 62 Chome				N/A	
Asokuchō 63 Chome				N/A	
Asokuchō 64 Chome				N/A	
Asokuchō 65 Chome				N/A	
Asokuchō 66 Chome				N/A	
Asokuchō 67 Chome				N/A	
Asokuchō 68 Chome				N/A	
Asokuchō 69 Chome				N/A	
Asokuchō 70 Chome				N/A	
Asokuchō 71 Chome				N/A	
Asokuchō 72 Chome				N/A	
Asokuchō 73 Chome				N/A	
Asokuchō 74 Chome				N/A	
Asokuchō 75 Chome				N/A	
Asokuchō 76 Chome				N/A	
Asokuchō 77 Chome				N/A	
Asokuchō 78 Chome				N/A	
Asokuchō 79 Chome				N/A	
Asokuchō 80 Chome				N/A	
Asokuchō 81 Chome				N/A	
Asokuchō 82 Chome				N/A	
Asokuchō 83 Chome				N/A	
Asokuchō 84 Chome				N/A	
Asokuchō 85 Chome				N/A	
Asokuchō 86 Chome				N/A	
Asokuchō 87 Chome				N/A	
Asokuchō 88 Chome				N/A	
Asokuchō 89 Chome				N/A	
Asokuchō 90 Chome				N/A	
Asokuchō 91 Chome				N/A	
Asokuchō 92 Chome				N/A	
Asokuchō 93 Chome				N/A	
Asokuchō 94 Chome				N/A	
Asokuchō 95 Chome				N/A	
Asokuchō 96 Chome				N/A	
Asokuchō 97 Chome				N/A	
Asokuchō 98 Chome				N/A	
Asokuchō 99 Chome				N/A	
Asokuchō 100 Chome				N/A	

Landslide Disaster Caution Zone: Overview

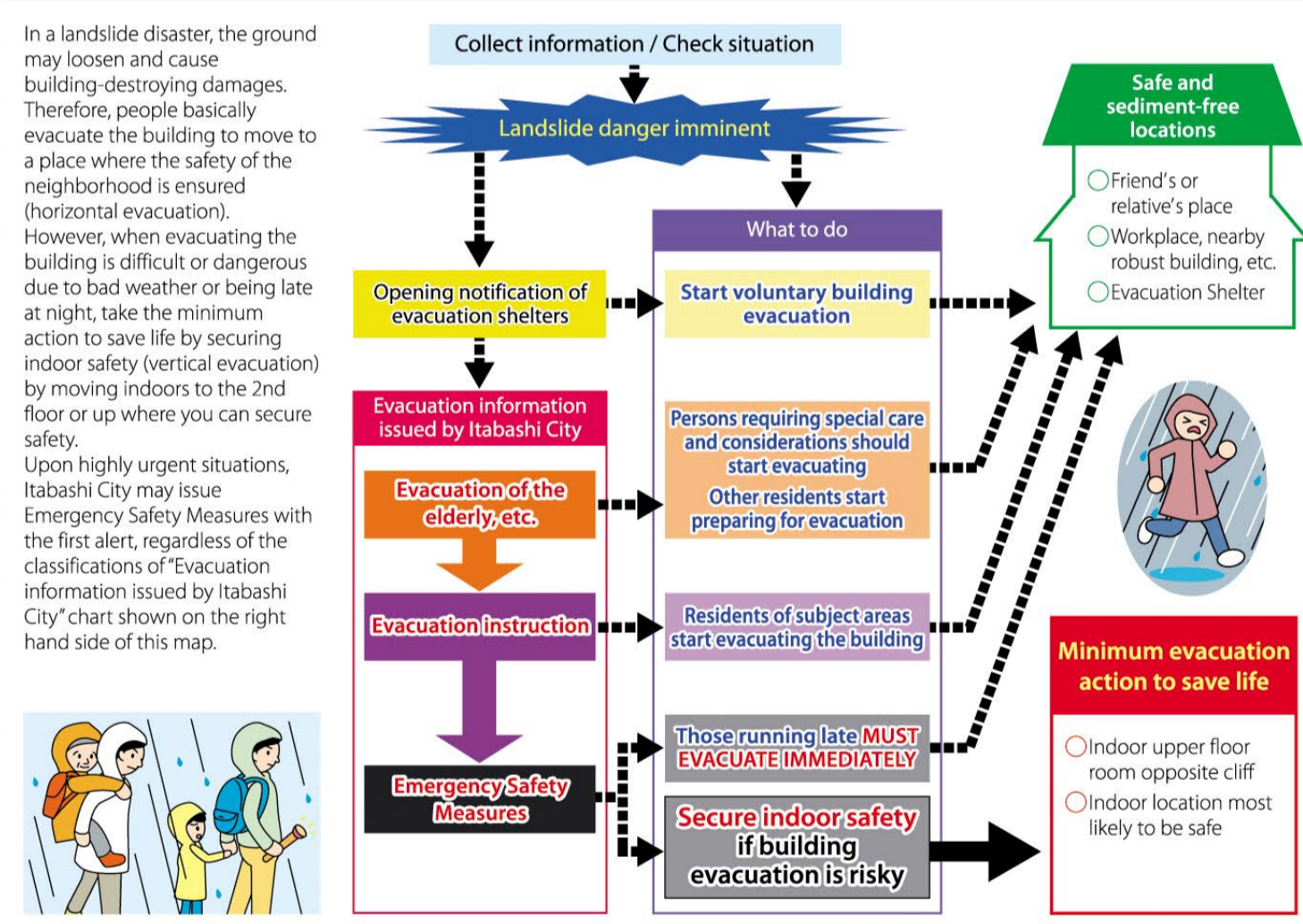


How to collect information

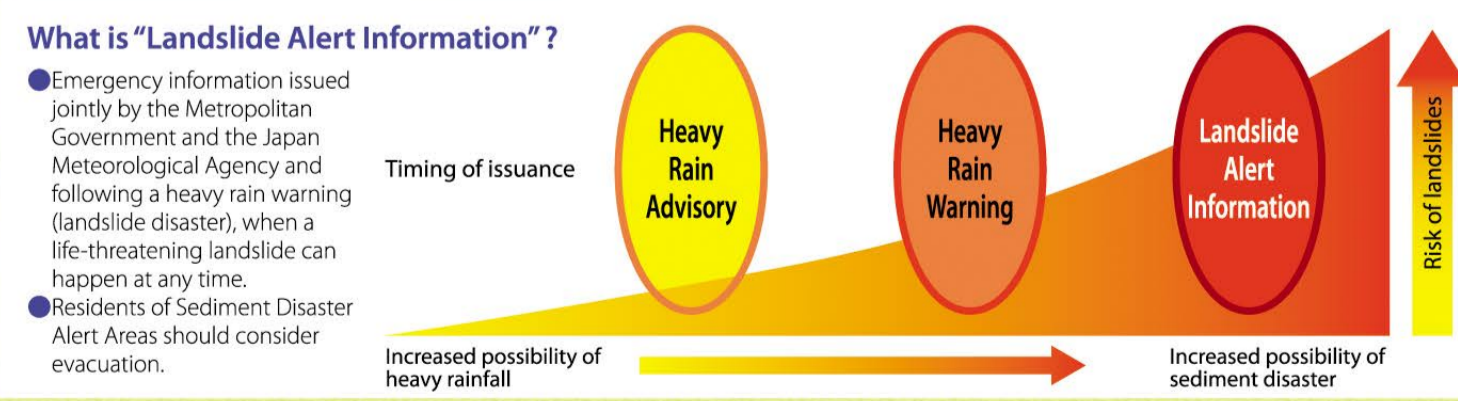
Listen to every public announcement made by the disaster prevention authorities, etc., to gather correct information. Never get confused by false rumors or become the one to spread them.

- How to collect information on evacuation, landslide alert, etc.**
 - Itabashi City official website**
Itabashi City official website
URL: <https://www.city.itabashi.tokyo.jp/>
 - Itabashi City Disaster Prevention Map**
A free app usable even when not connected to the Internet. You can browse the hazard map, disaster prevention information, and the disaster prevention guide published by the City.
Android / iOS
 - Itabashi City Disaster Preparation information e-mail newsletter service / Itabashi City official LINE account**
E-mail/LINE newsletters of various weather information announced by the JMA, the rainfall amount/river water level information observed by the City, and urgent notices from the City.
 - Itabashi City official accounts**
Itabashi City official LINE account
 - Area Mail/Emergency Mail Service**
Sends out information from the government or the City at times of disaster, automatically applicable phones that happen to be in the Itabashi City area at such times. No registration required. Supported mobile phone carriers: NTT docomo, au, SoftBank, Rakuten Mobile
 - Emergency administration radio / Phone answering service**
The City's radio tower broadcasts disaster information. You can also check the broadcast content by calling the number below:
☎ 0120-357-411 (toll free)
 - Itabashi City Disaster Preparation & Crime Prevention Information X (former Twitter) @itabashi_bousai**
 - Japan Meteorological Agency (JMA) website**
You can check the issuance status of the landslide alert information, and the specified areas with higher landslide risks (Landslide Risk Map: hazard distribution of Heavy Rain Warning (landslide disaster)).
 - City sound car / fire engine / police car**
Sound cars, etc. send out disaster information, etc.

Evacuation activities at time of sediment disaster



Issuance of Landslide Alert Information



Evacuation tips

- Collect latest info**
Check the latest weather/disaster/evacuation information on TV/Internet.
- Check before you evacuate the building**
Turn off the circuit breaker and the gas main. Check the evacuation destination and let your friends and relatives know in advance that you will be evacuating.
- Evacuate early**
Watch out how the rain falls and the surrounding situation and evacuate early if you feel the danger. When heavy rain is expected to fall during the night time, evacuate before sunset.
- Dress safe and evacuate with more than 1 person**
Upon evacuating, dress in a comfortable outfit. Try not to evacuate on your own and call out to people around you as well.

Detailed area maps

* Disasters may occur in the evacuation route. When you evacuate, watch out for the situation of your surroundings and use a safe route.

Evacuation destination	E.S. J.H.S.
Notes	

Always Be Prepared

- Check your evacuation route**
Check your evacuation route to the evacuation center. Safer routes are shown with green arrows on the map. Add the routes from your home, etc. to the map.
- Help each other during evacuation**
The elderly, the disabled, and those with small children need to evacuate early. When the need arises, work together with your neighbors to evacuate safely.
- Prepare for the survival kit**
Pack your necessities in advance so that you can evacuate with them anytime. Itabashi City offers "emergency supplies" at special prices for residents and people who have workplaces in the City. For more information, go to the City's official website or call its Community Disaster Prevention Group, Community Disaster Prevention Support Division (phone 03-3579-2151).

Legend

- Sediment Disaster Special Alert Area
- Sediment Disaster Alert Area
- Area Number
- Evacuation Route
- Evacuation Shelter
- Rain Gauge
- Public Facility
- Police Station/Police Box
- Fire Station/Fire Station Branch Office
- School
- Hospital
- Post Office
- Shrine
- Temple

