

Flood Hazard Map (Inundation Duration of Arakawa River)

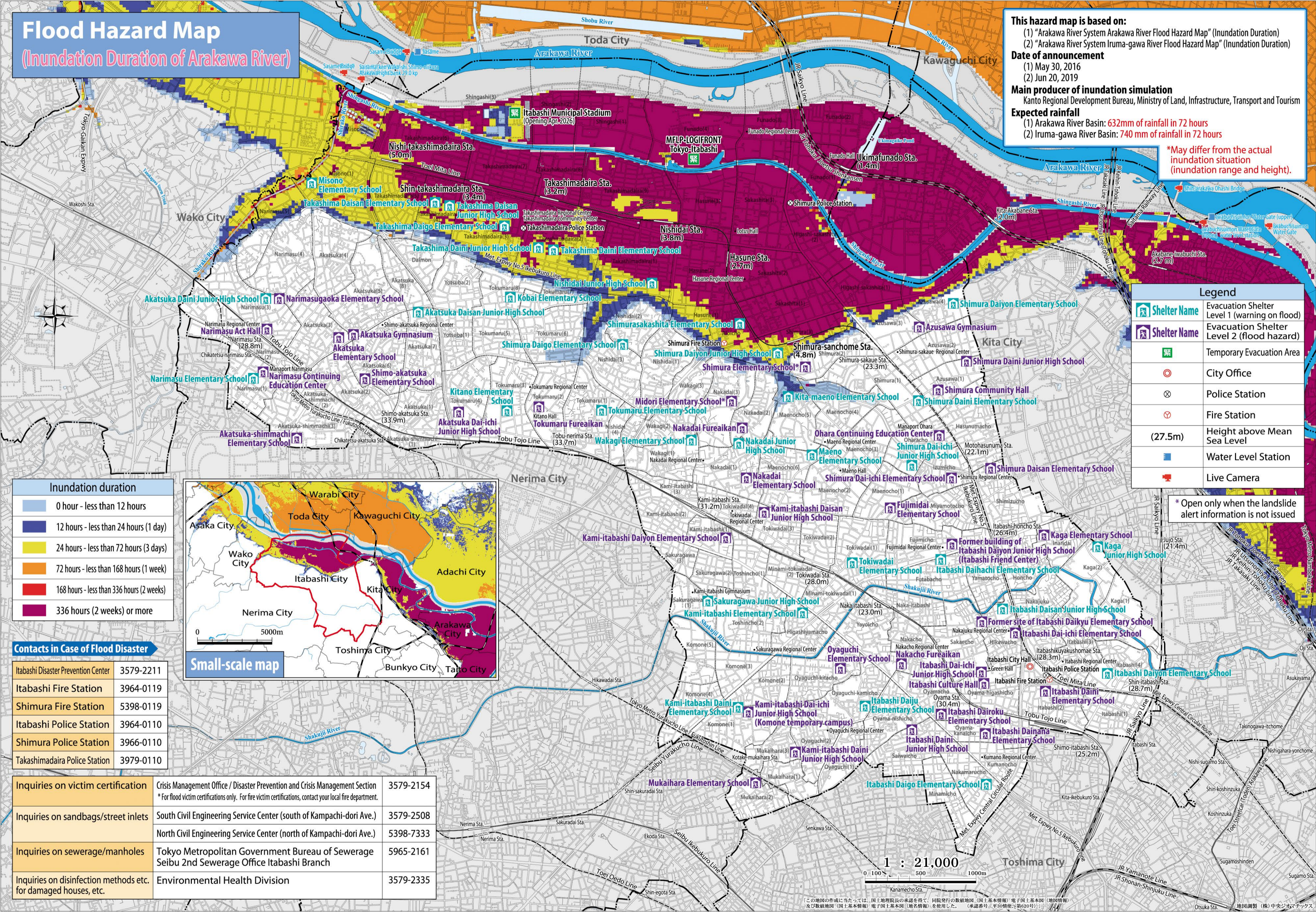
This hazard map is based on:
 (1) "Arakawa River System Arakawa River Flood Hazard Map" (Inundation Duration)
 (2) "Arakawa River System Iruma-gawa River Flood Hazard Map" (Inundation Duration)

Date of announcement
 (1) May 30, 2016
 (2) Jun 20, 2019

Main producer of inundation simulation
 Kanto Regional Development Bureau, Ministry of Land, Infrastructure, Transport and Tourism

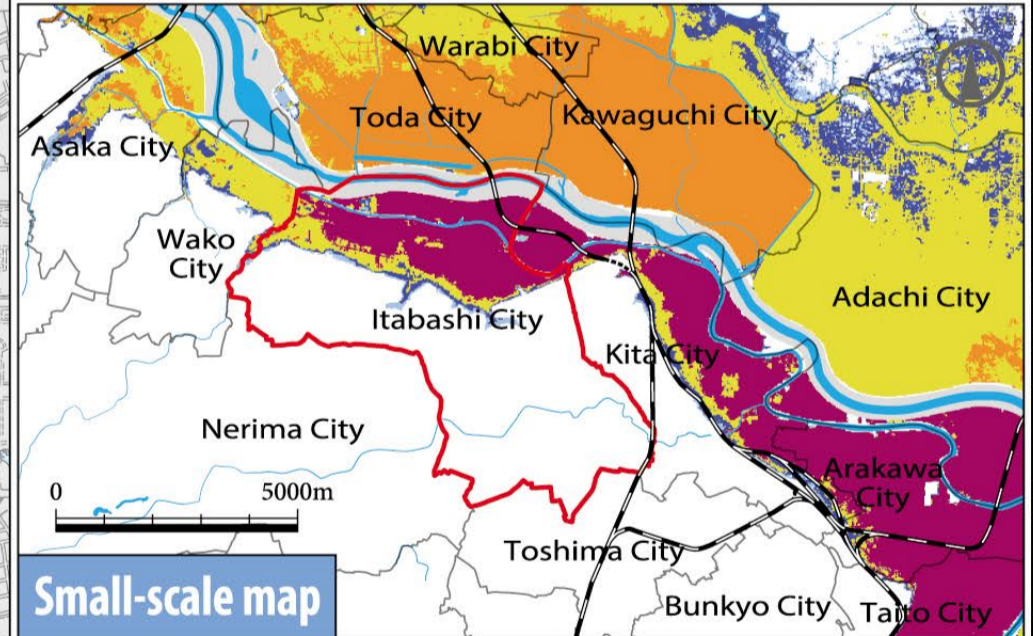
Expected rainfall
 (1) Arakawa River Basin: 632mm of rainfall in 72 hours
 (2) Iruma-gawa River Basin: 740 mm of rainfall in 72 hours

**May differ from the actual inundation situation (inundation range and height).*



Legend	
	Shelter Name
	Evacuation Shelter Level 1 (warning on flood)
	Evacuation Shelter Level 2 (flood hazard)
	Temporary Evacuation Area
	City Office
	Police Station
	Fire Station
	Height above Mean Sea Level
	Water Level Station
	Live Camera

Inundation duration	
	0 hour - less than 12 hours
	12 hours - less than 24 hours (1 day)
	24 hours - less than 72 hours (3 days)
	72 hours - less than 168 hours (1 week)
	168 hours - less than 336 hours (2 weeks)
	336 hours (2 weeks) or more



Contacts in Case of Flood Disaster	
Itabashi Disaster Prevention Center	3579-2211
Itabashi Fire Station	3964-0119
Shimura Fire Station	5398-0119
Itabashi Police Station	3964-0110
Shimura Police Station	3966-0110
Takashimadaira Police Station	3979-0110

Inquiries on victim certification	Crisis Management Office / Disaster Prevention and Crisis Management Section * For flood victim certifications only. For fire victim certifications, contact your local fire department.	3579-2154
Inquiries on sandbags/street inlets	South Civil Engineering Service Center (south of Kampachi-dori Ave.) North Civil Engineering Service Center (north of Kampachi-dori Ave.)	3579-2508 5398-7333
Inquiries on sewerage/manholes	Tokyo Metropolitan Government Bureau of Sewerage Seibu 2nd Sewerage Office Itabashi Branch	5965-2161
Inquiries on disinfection methods etc. for damaged houses, etc.	Environmental Health Division	3579-2335

1 : 21,000
 0 100 500 1000m

この地図の作成に当たっては、国土地理院院長の承認を得て、同院発行の数値地図(国土基本情報)電子国土基本図(地図情報)及び数値地図(国土基本情報)電子国土基本図(地名情報)を使用した。(承認番号/平30情使-第620号) 地図調整(株)中央シオマテックス