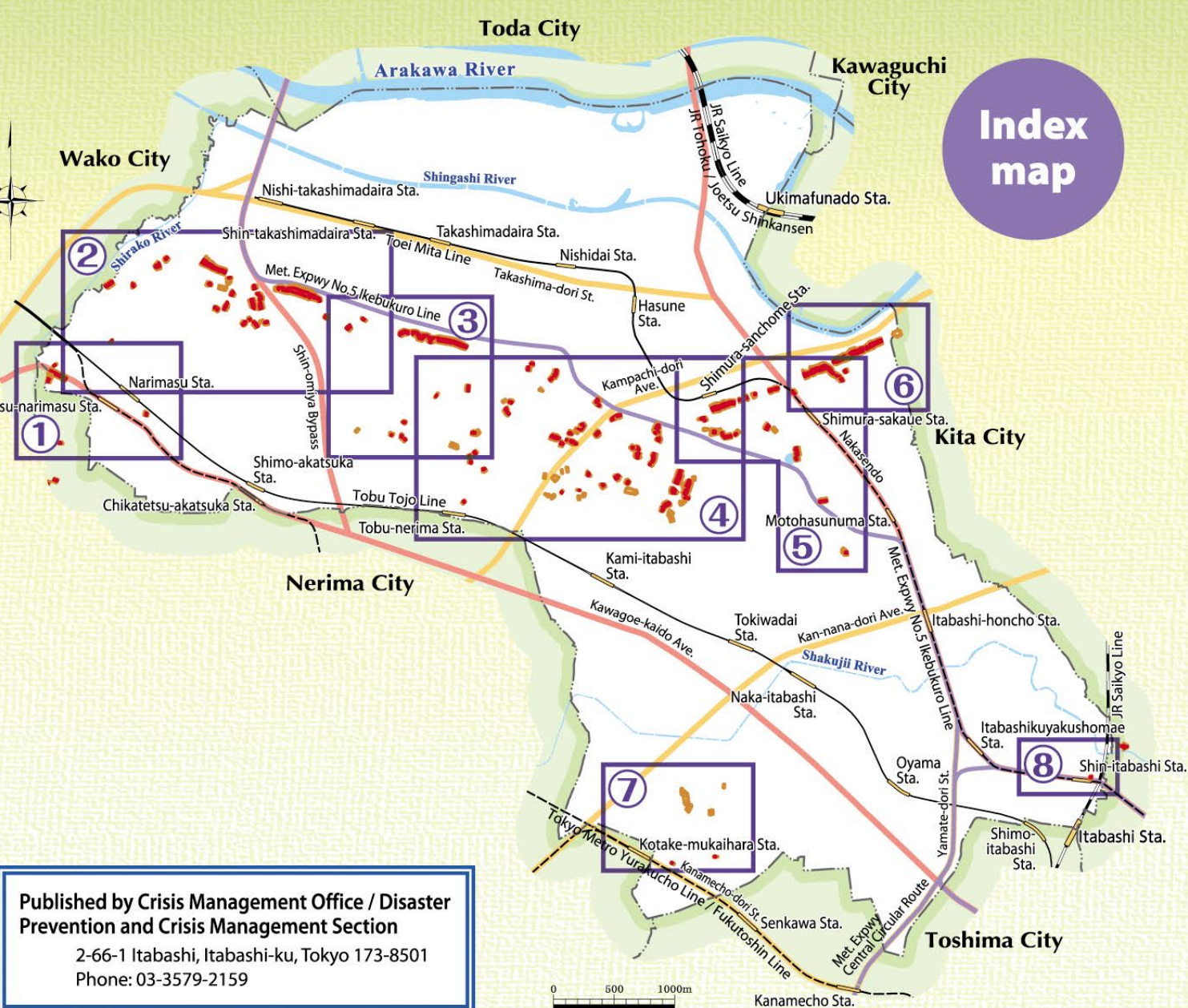


Itabashi City Sediment Disaster Hazard Map

The Itabashi City Sediment Disaster Hazard Map shows the "Sediment Disaster (Special) Alert Areas" and evacuation sites and routes as of November 30, 2025, designated by the Tokyo Metropolitan Government based on the Sediment Disasters Prevention Act. Types of sediment disasters (*) are "landslides of rapid slopes (cliff failure)", "mudslides", and "landslides", all of which are tremendous disasters caused by heavy rain etc., and may deprive people's lives and properties in an instance. Please make use of this Sediment Disaster Hazard Map so that you can check hazardous locations and evacuation methods with your family members and neighbors on a regular basis.

*Note: Possible sediment disasters in Itabashi City are **cliff failures (landslides of rapid slopes) only**.



Published by Crisis Management Office / Disaster Prevention and Crisis Management Section
2-66-1 Itabashi, Itabashi-ku, Tokyo 173-8501
Phone: 03-3579-2159

Address Index

This index shows which districts are/are not designated as Sediment Disaster Alert Area or Sediment Disaster Special Alert Area. Districts which are designated, for the duration of designated areas, please refer to the respective detailed area map.

District name	Sediment Disaster Alert Area	Sediment Disaster Special Alert Area	Detailed maps	District # (■) (1-digit numbers)
Asakusa 1 Chome				N/A
Asakusa 2 Chome				N/A
Asakusa 3 Chome				N/A
Asakusa 4 Chome				N/A
Asakusa 5 Chome				N/A
Asakusa 6 Chome				N/A
Asakusa 7 Chome				N/A
Asakusa 8 Chome				N/A
Asakusa 9 Chome				N/A
Asakusa 10 Chome				N/A
Asakusa 11 Chome				N/A
Asakusa 12 Chome				N/A
Asakusa 13 Chome				N/A
Asakusa 14 Chome				N/A
Asakusa 15 Chome				N/A
Asakusa 16 Chome				N/A
Asakusa 17 Chome				N/A
Asakusa 18 Chome				N/A
Asakusa 19 Chome				N/A
Asakusa 20 Chome				N/A
Asakusa 21 Chome				N/A
Asakusa 22 Chome				N/A
Asakusa 23 Chome				N/A
Asakusa 24 Chome				N/A
Asakusa 25 Chome				N/A
Asakusa 26 Chome				N/A
Asakusa 27 Chome				N/A
Asakusa 28 Chome				N/A
Asakusa 29 Chome				N/A
Asakusa 30 Chome				N/A
Asakusa 31 Chome				N/A
Asakusa 32 Chome				N/A
Asakusa 33 Chome				N/A
Asakusa 34 Chome				N/A
Asakusa 35 Chome				N/A
Asakusa 36 Chome				N/A
Asakusa 37 Chome				N/A
Asakusa 38 Chome				N/A
Asakusa 39 Chome				N/A
Asakusa 40 Chome				N/A
Asakusa 41 Chome				N/A
Asakusa 42 Chome				N/A
Asakusa 43 Chome				N/A
Asakusa 44 Chome				N/A
Asakusa 45 Chome				N/A
Asakusa 46 Chome				N/A
Asakusa 47 Chome				N/A
Asakusa 48 Chome				N/A
Asakusa 49 Chome				N/A
Asakusa 50 Chome				N/A
Asakusa 51 Chome				N/A
Asakusa 52 Chome				N/A
Asakusa 53 Chome				N/A
Asakusa 54 Chome				N/A
Asakusa 55 Chome				N/A
Asakusa 56 Chome				N/A
Asakusa 57 Chome				N/A
Asakusa 58 Chome				N/A
Asakusa 59 Chome				N/A
Asakusa 60 Chome				N/A
Asakusa 61 Chome				N/A
Asakusa 62 Chome				N/A
Asakusa 63 Chome				N/A
Asakusa 64 Chome				N/A
Asakusa 65 Chome				N/A
Asakusa 66 Chome				N/A
Asakusa 67 Chome				N/A
Asakusa 68 Chome				N/A
Asakusa 69 Chome				N/A
Asakusa 70 Chome				N/A
Asakusa 71 Chome				N/A
Asakusa 72 Chome				N/A
Asakusa 73 Chome				N/A
Asakusa 74 Chome				N/A
Asakusa 75 Chome				N/A
Asakusa 76 Chome				N/A
Asakusa 77 Chome				N/A
Asakusa 78 Chome				N/A
Asakusa 79 Chome				N/A
Asakusa 80 Chome				N/A
Asakusa 81 Chome				N/A
Asakusa 82 Chome				N/A
Asakusa 83 Chome				N/A
Asakusa 84 Chome				N/A
Asakusa 85 Chome				N/A
Asakusa 86 Chome				N/A
Asakusa 87 Chome				N/A
Asakusa 88 Chome				N/A
Asakusa 89 Chome				N/A
Asakusa 90 Chome				N/A
Asakusa 91 Chome				N/A
Asakusa 92 Chome				N/A
Asakusa 93 Chome				N/A
Asakusa 94 Chome				N/A
Asakusa 95 Chome				N/A
Asakusa 96 Chome				N/A
Asakusa 97 Chome				N/A
Asakusa 98 Chome				N/A
Asakusa 99 Chome				N/A
Asakusa 100 Chome				N/A

Detailed area maps

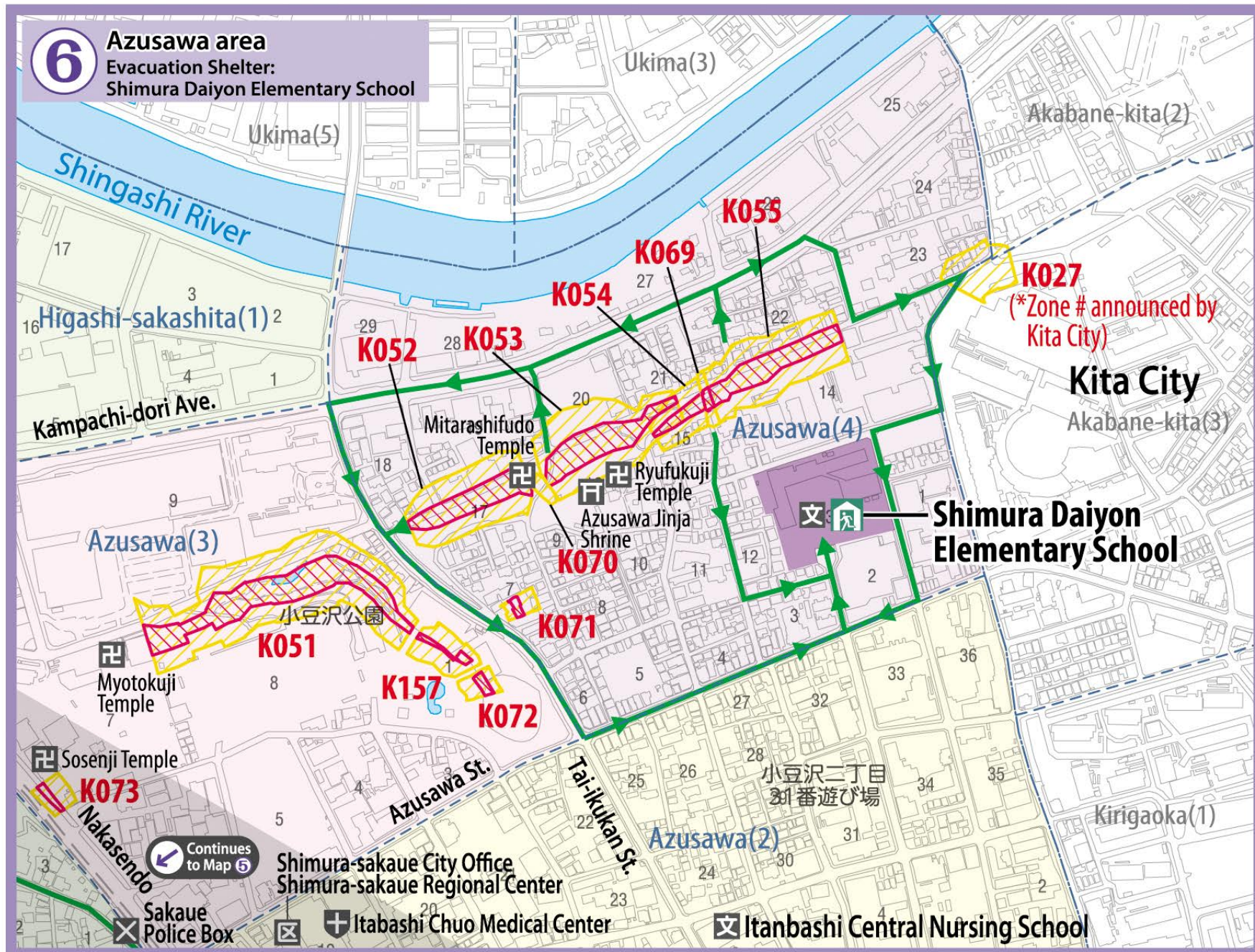
* Disasters may occur in the evacuation route. When you evacuate, watch out for the situation of your surroundings and use a safe route.
* Landslide Disaster Caution Zones K118, 155 thru 158, and 160 thru 162 will be designated in the future. Zone locations and shapes are subject to change, depending on terrain alterations. For the latest information, please check the Itabashi City website.



Always Be Prepared

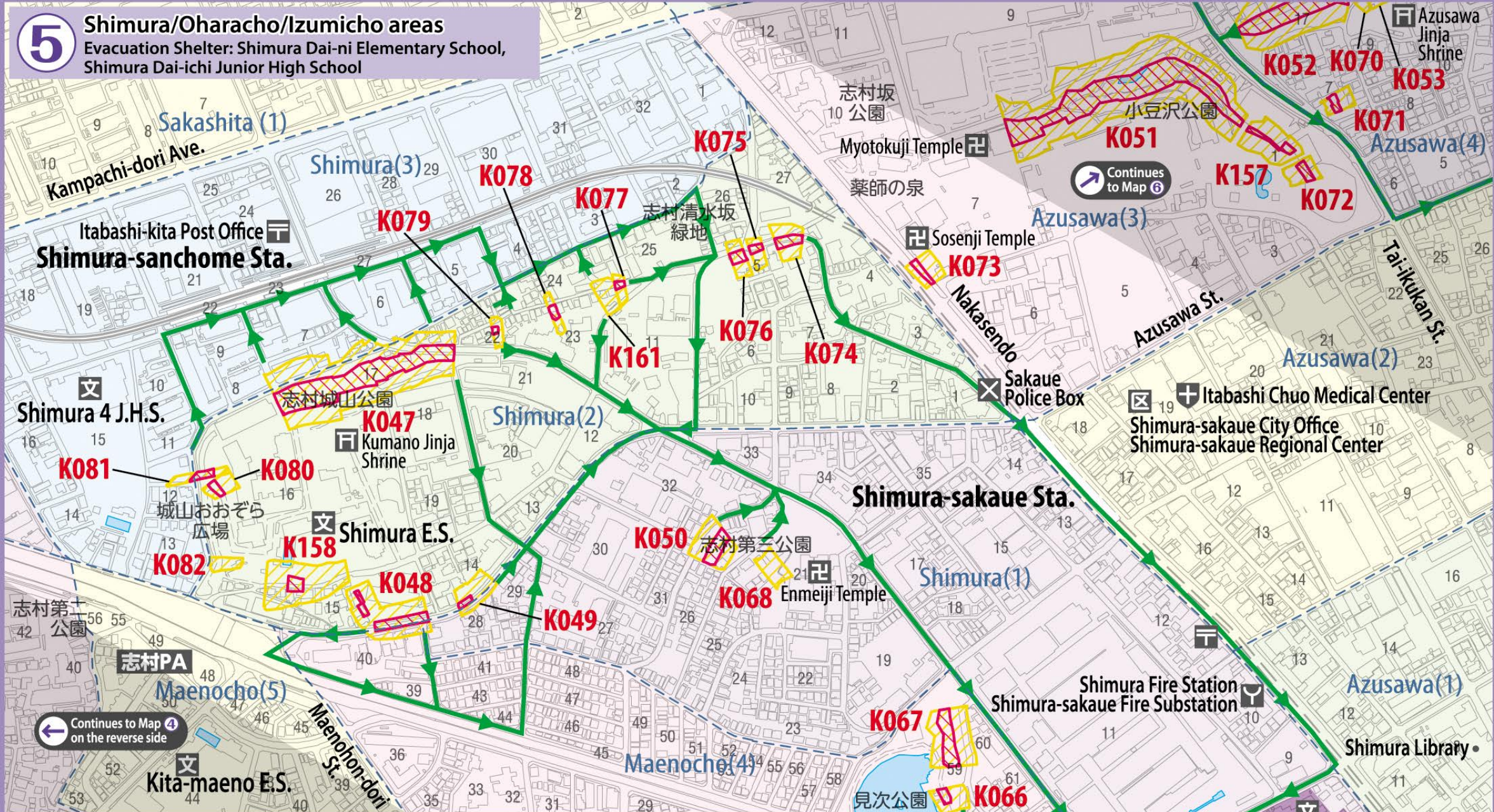
- Check your evacuation route: Check your evacuation route to the evacuation center. Safer routes are shown with green arrows on the map. Add the routes from your home, etc., to the map.
- Help each other during evacuation: The elderly, the disabled, and those with small children need to evacuate early. When the need arises, work together with your neighbors to evacuate safely.
- Prepare for the survival kit: Pack your necessities in advance so that you can evacuate with them anytime. Itabashi City offers "emergency supplies" at special prices for residents and people who have workplaces in the City. For more information, go to the City's official website or call its Community Disaster Prevention Unit, Community Disaster Prevention Support Division (phone 03-3579-2151).

Evacuation destination	Notes
E.S.	
J.H.S.	

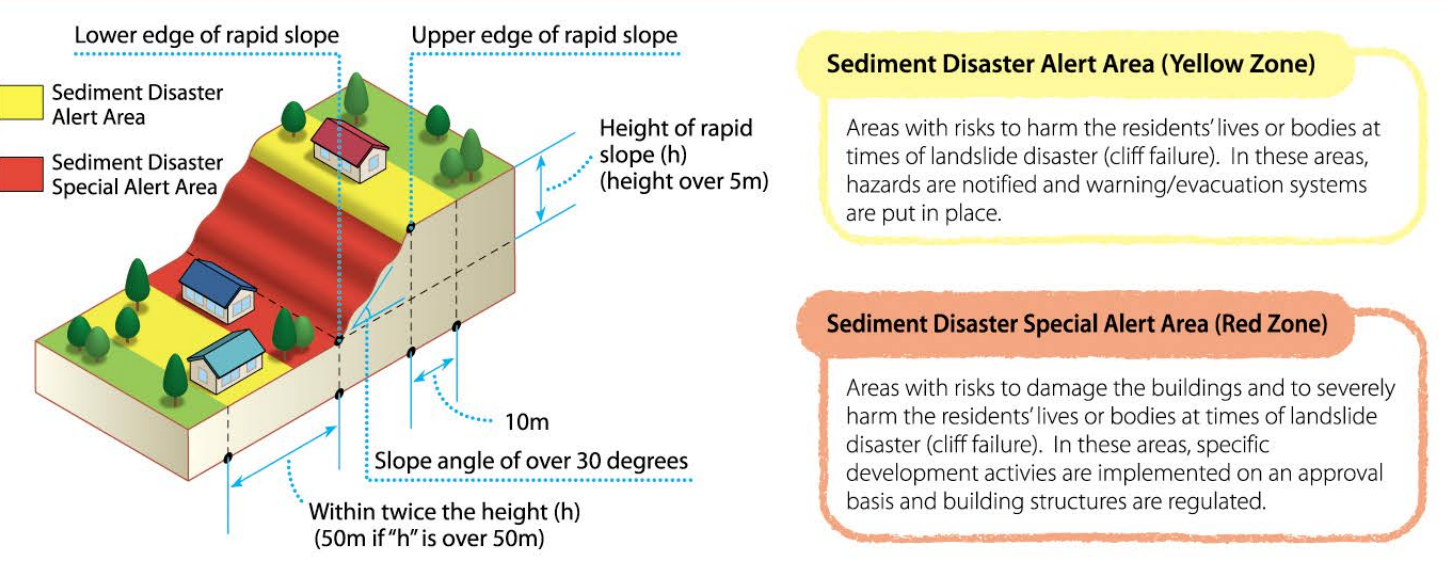


Legend

- Sediment Disaster Special Alert Area
- Sediment Disaster Alert Area
- Area Number
- Evacuation Route
- Evacuation Shelter
- Rain Gauge
- Public Facility
- Police Station/Police Box
- Fire Station/Fire Station Branch Office
- School
- Hospital
- Post Office
- Shrine
- Temple



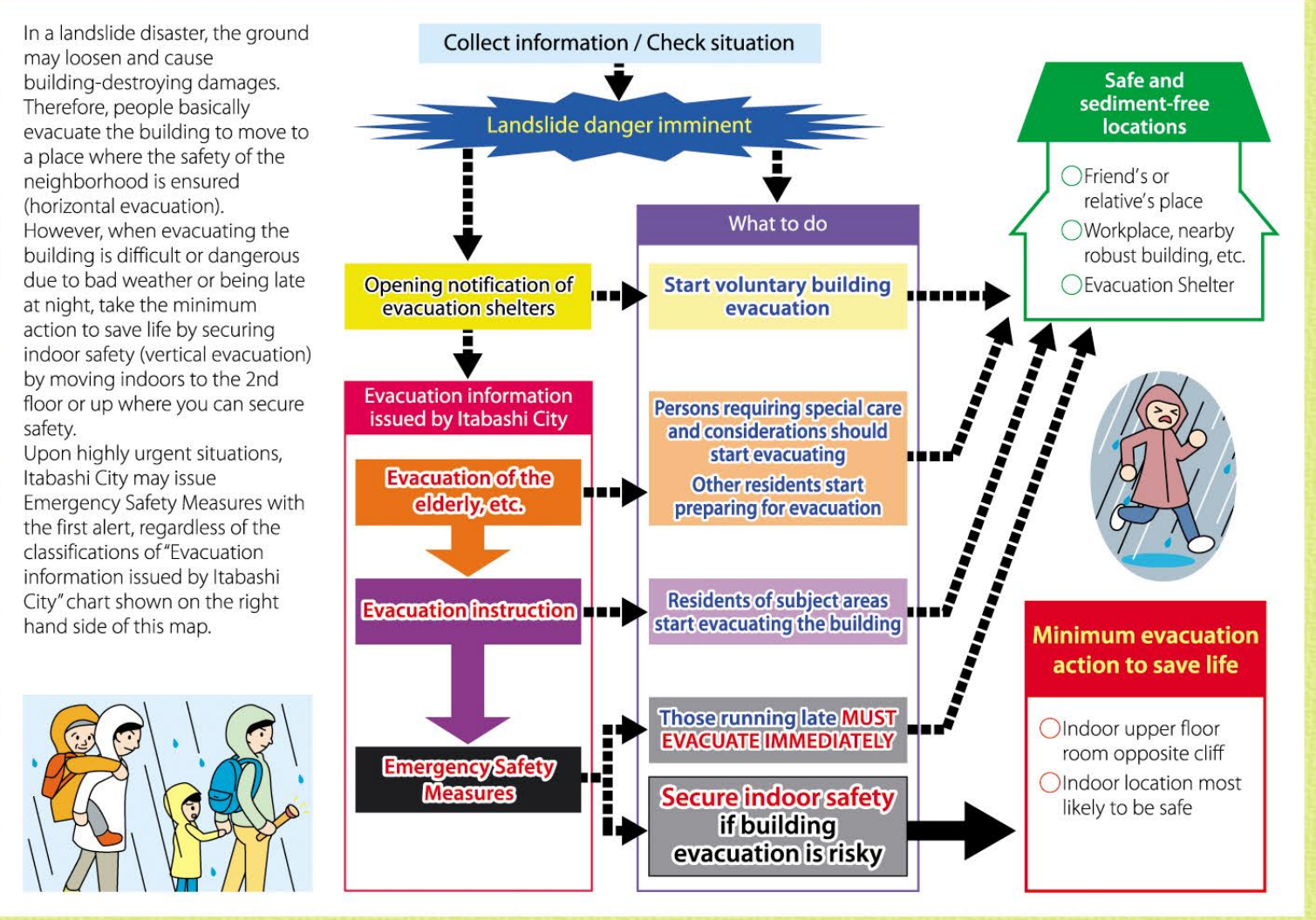
Landslide Disaster Caution Zone: Overview



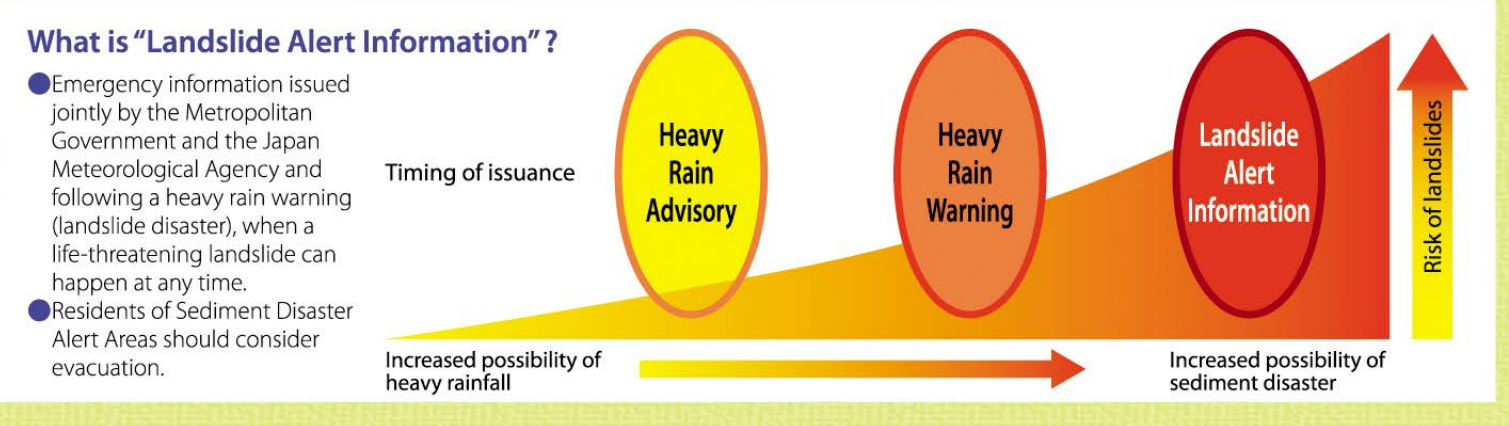
How to collect information

- Listen to every public announcement made by the disaster prevention authorities, etc., to gather correct information. Never get confused by false rumors or become the one to spread them.
- How to collect information on evacuation, landslide alert, etc.
 - Itabashi City official website: <https://www.city.itabashi.tokyo.jp/>
 - Itabashi Disaster Prevention + Portal and App: A one-stop portal of useful information at times of disaster, such as at-a-glance maps and lists of evacuation instructions and shelter opening status, public transportation services, and weather information.
 - Itabashi City Disaster Preparation information e-mail newsletter service / Itabashi City official LINE account: E-mail/LINE newsletters of various weather information announced by the JMA, the rainfall amount/river water level information observed by the City, and urgent notices from the City.
 - Itabashi City official accounts: Area Mail/Emergency Mail Service: Sends out information from the government or the City, at times of disaster, automatically applicable phones that happen to be in the Itabashi City area at such times. No registration required. Supported mobile phone carriers: NTT docomo, au, SoftBank, Rakuten Mobile.
 - Emergency administration radio / Phone answering service: The City's radio tower broadcasts disaster information. You can also check the broadcast content by calling the number below: 0120-357-411 (toll free).
 - Itabashi City Disaster Preparation + Crime Prevention Information X (former Twitter) @itabashi_bousai
 - Japan Meteorological Agency (JMA) website: You can check the issuance status of the landslide alert information, and the specified areas with higher landslide risks (Landslide Risk Map: hazard distribution of Heavy Rain Warning [landslide disaster]).
 - City sound car / fire engine / police car: Sound cars, etc. send out disaster information, etc.

Evacuation activities at time of sediment disaster



Issuance of Landslide Alert Information



Evacuation tips

- Collect latest info: Check the latest weather/disaster/evacuation information on TV/Internet.
- Evacuate early: Watch out how the rain falls and the surrounding situation and evacuate early if you feel the danger. When heavy rain is expected to fall during the night time, evacuate before sunset.
- Check before you evacuate the building: Turn off the circuit breaker and the gas main. Check the evacuation destination and let your friends and relatives know in advance that you will be evacuating.
- Dress safe and evacuate with more than 1 person: Upon evacuating, dress in a comfortable outfit. Try not to evacuate on your own and call out to people around you as well.