

Flood Hazard Map (Localized Torrential Rain)

This hazard map is based on:
 ① Inundation Assumption Area Map of Shakuji River and Shirako River basin
 ② Inundation Assumption Area Map of Sumida River and Shingashi River basin
Date of announcement
 ① May 23, 2019
 ② March 30, 2021
Main producer of inundation simulation
 Tokyo Metropolitan Government
Assumed rainfall (maximum possible rainfall)
 Heaviest hourly rainfall 153 mm, Total rainfall: 690 mm
 *May differ from the actual inundation situation (inundation range and height).

Expected inundation height

▼Approx. Water Depth [Inundation Height]

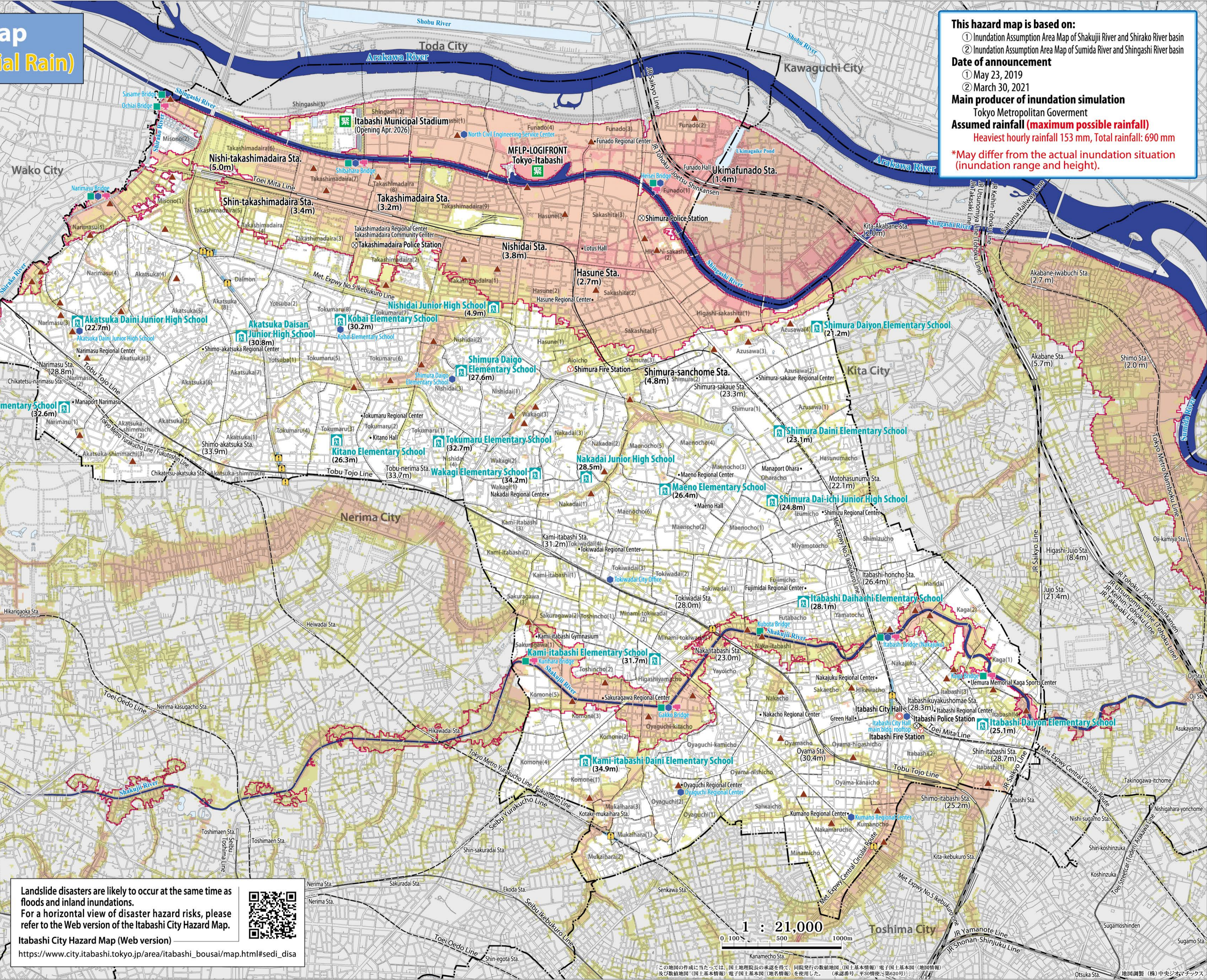
- Inundation height up to 2nd floor ceiling or higher [5.0m]
- Inundation height between 1st floor ceiling and close to 2nd floor ceiling [3.0m]
- Inundation height between 1st floor level and 1st floor ceiling [1.0 m]
- First floor level under water [0.5 m]
- Inundation height up to under 1st floor [0-1 m]

Scope of simulated inundation due to flood in medium/small rivers

Legend	
	Evacuation Shelter
	Temporary Evacuation Area
	Sandbag Base
	Height above Mean Sea Level
	Water Level Gauge
	Rain Gauge
	Live Camera
	Underpass

The color scheme of the inundation depth is designated by the government based on the standards that take in the ISO criteria and considerations for people with impaired vision.

Landslide disasters are likely to occur at the same time as floods and inland inundations. For a horizontal view of disaster hazard risks, please refer to the Web version of the Itabashi City Hazard Map.
 Itabashi City Hazard Map (Web version)
https://www.city.itabashi.tokyo.jp/area/itabashi_bousai/map.html#sedi_disa



この地図の作成に当たっては、国土地理院の承認を得て、同院発行の数値地図(国土基本情報)電子国土基本図(地図情報)及び数値地図(国土基本情報)電子国土基本図(地名情報)を使用した。(承認番号:平30情保第620号) 地図調整 (株)中央ジオマテックス